



XE380C GM

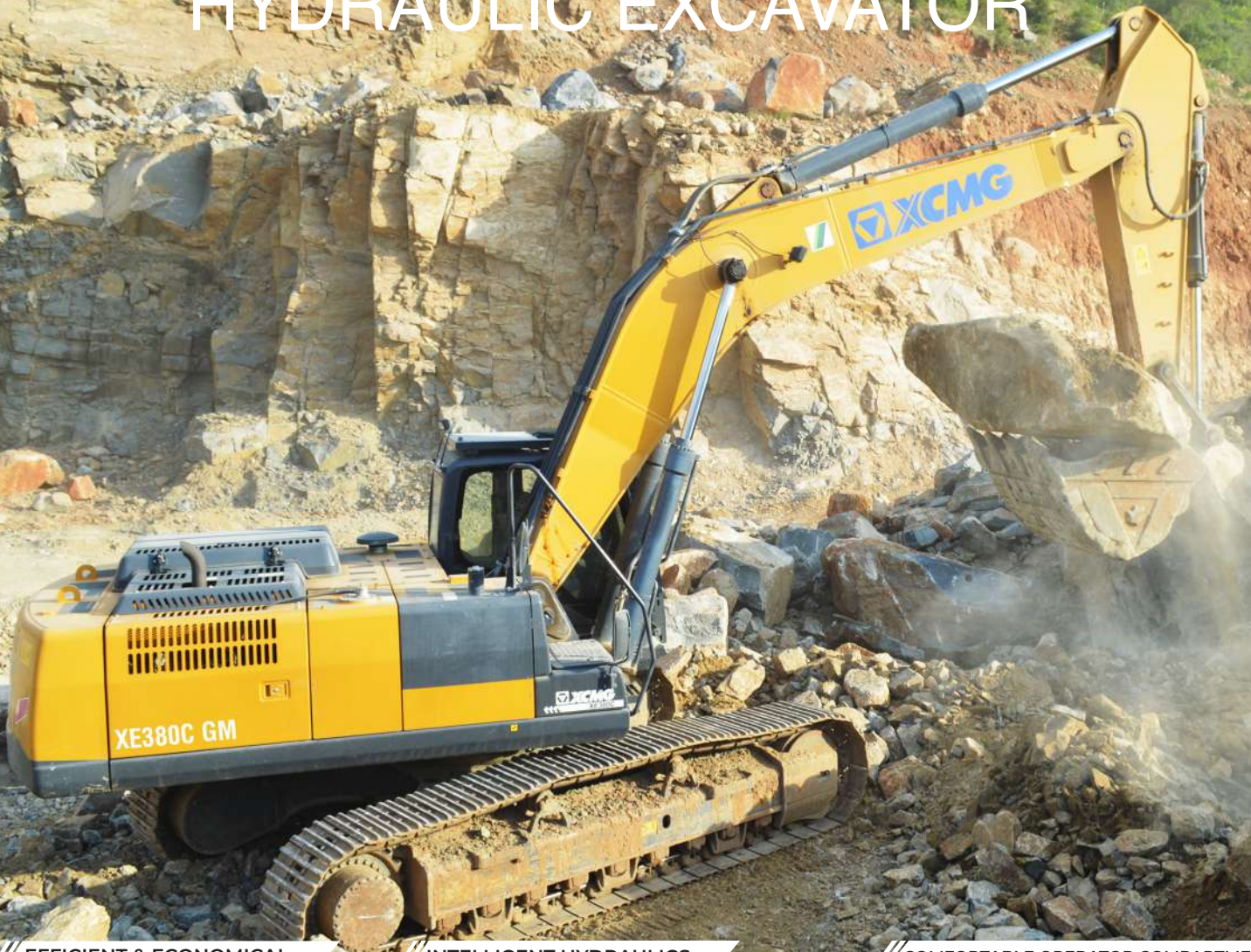
HYDRAULIC EXCAVATOR

- ENGINE POWER - 259 hp
- ENGINE MAKE - ISUZU (Japan)
- OPERATING WEIGHT - 36600 kg
- BUCKET CAPACITY - 1.5 - 2.1 cu.m



XE380C GM

HYDRAULIC EXCAVATOR



EFFICIENT & ECONOMICAL

- ◆ Powerful Isuzu (Japan) Engine ensures optimum power
- ◆ Low fuel Consumption & High Reliability

INTELLIGENT HYDRAULICS

- ◆ XEICS intelligent control system saves additional Fuel & ensures Higher Productivity
- ◆ 4 Different (L, B, S & H) Modes for all application
- ◆ Globally Acclaimed Hydraulics - Long Life

COMFORTABLE OPERATOR COMPARTMENT

- ◆ All Around 360 degree visibility
- ◆ Spacious HVAC, less noise cabin with FM Radio
- ◆ Integrated 7" instrument Cluster
- ◆ ROPS/FOPS# Certified Cabin ensure Operator's Safety

ROBUST STRUCTURE

- ◆ Reinforced Boom, Arm & Bucket suitable for Indian conditions
- ◆ Bucket link Single piece Casted for long life
- ◆ Large capacity wear resistance HD buckets

STRONG UNDERCARRIAGE

- ◆ Robust X frame undercarriage with additional reinforcement
- ◆ High wear Resistance Sprocket, Idler, Rollers, track chain reduce cost

EASY SERVICEABILITY

- ◆ All Maintenance points are accessible from Ground level
- ◆ Quick & hassle free service

SPECIFICATION

XE380C GM

ENGINE

Model	ISUZU AA-6HK1XQP
Type	6 Cylinder, Turbocharged, Air to air intercooler
Rated Power	259 HP @ 2200 rpm
Max Torque	873 Nm @ 1700 rpm
Batteries	12 V x 2
Displacement	7.79 L

HYDRAULIC SYSTEM

Main Pumps	2 Variable Displacement Axial Piston Pumps
Max Flow	2x320 lpm
Pilot Pump	1 Gear Pump
Swing Speed	9.7 rpm

RELIEF VALVE SETTINGS

Main Safety Valve Pressure	34.3/37 Mpa
Swing system Pressure	26.5 Mpa
Travel system Pressure	34.3 Mpa
Pilot system Pressure	3.9 Mpa

UNDERCARRIAGE

Max Travel Speed	5.4 km/hr
Max traction Force	285 kN
Gradeability	≤35 degree
No of Upper Roller/Side	2
No of Lower Roller/Side	9
No of Track Shoes/Side	49
Shoe width	600 mm

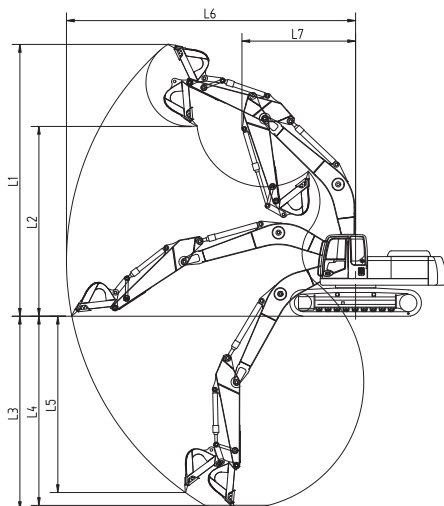
OPERATOR CABIN

HVAC	STD
Front Mesh Guard	OPT

REFILL CAPACITIES

Fuel Tank	630 L
Engine Coolant	23 L
Engine Oil	30 L
Travel device(Per side)	9.5 L
Swing Device	10.5 L
Hydraulic Tank	320 L
Hydraulic System	430 L

WORKING RANGE



BUCKET SELECTION GUIDE

Capacity ISO heaped	width (mm)	Teeth	weight (kg)	Recommendation XE380C GM	
				2670mm	3200mm
1.7m ³ (HD)	1400	5	1575	⊙	✗
1.7m ³ (GP)	1400	5	1495	○	⊙
1.8m ³ (GP)	1490	5	1562	○	✗
1.5m ³ (HD)	1320	5	1505	○	⊙
2.1m ³ (EM)	1560	5	1650	○	✗

- ⊙ - Suitable for materials with density of 2000kg/m³ or less
- - Suitable for materials with density of 1600kg/m³ or less
- - Suitable for materials with density of 1100kg/m³ or less
- ✗ - Not applicable

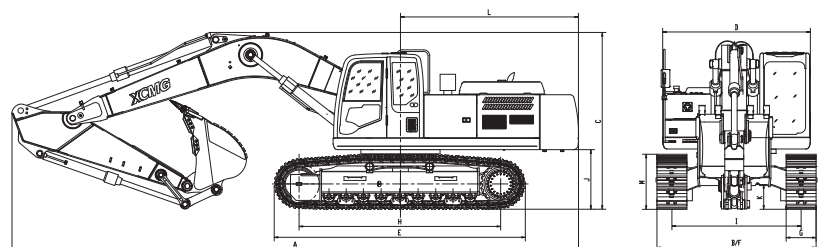
WORKING RANGE

(unit: mm)		ARM 2670mm
L1	Max. digging height	10123
L2	Max. dumping height	6947
L3	Max. digging depth	6927
L4	Max. depth cut (8 ft) Level bottom	6709
L5	Max. vertical wall digging depth	5312
L6	Max. digging radius	10470
L7	Min. swing radius	4424

DIMENSION

(unit : mm)		BOOM 6400 mm ARM 2670 mm
A	Overall Length	11386
B	Overall Width	3190
C	Overall Height	3530
D	Width of Platform	2950
E	Length of Crawler/Track	5035
F	Overall Width of Crawler	3190
G	Track Shoe Width	600
H	Tumbler Distance	4040
I	Track Gauge	2590
J	Ground Clearance of Counterweight	1197
K	Min. Ground Clearance	500
L	Min. Tail Swing Radius	3570
M	Height of Track	1105

DIMENSION



LARGEST NETWORK



SCHWING STETTER (INDIA) PRIVATE LIMITED

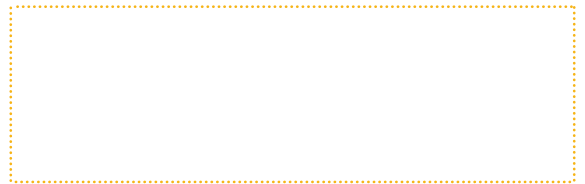
F71/72 SIPCOT Industrial Estate, Irungattukottai, Kanchipuram District - 602117, Tamil Nadu, India.
GIN No. U45309TN1998PTC046270

Mobile: +91 9176606120; Landline: +91 (44) 71378106

enquiry@schwingstetterindia.com

www.schwingstetterindia.com

AUTHORISED DEALER



Note: This catalogue may contain attachments and optional equipment that may not available in your area and it may contain photographs of machines with specifications that may differ from those of the machines sold in your territory. Please consult your nearest Schwing Stetter - XCMG dealer for any information on those items you require. Due to our policy decision on continuous product improvements, all designs and specifications are subject to modifications without permission.

Copyright by Schwing Stetter India Pvt Ltd; No part of this catalogue shall be reproduced anywhere in whatsoever format without consent by SSIPL.